



ANZCA
FPM

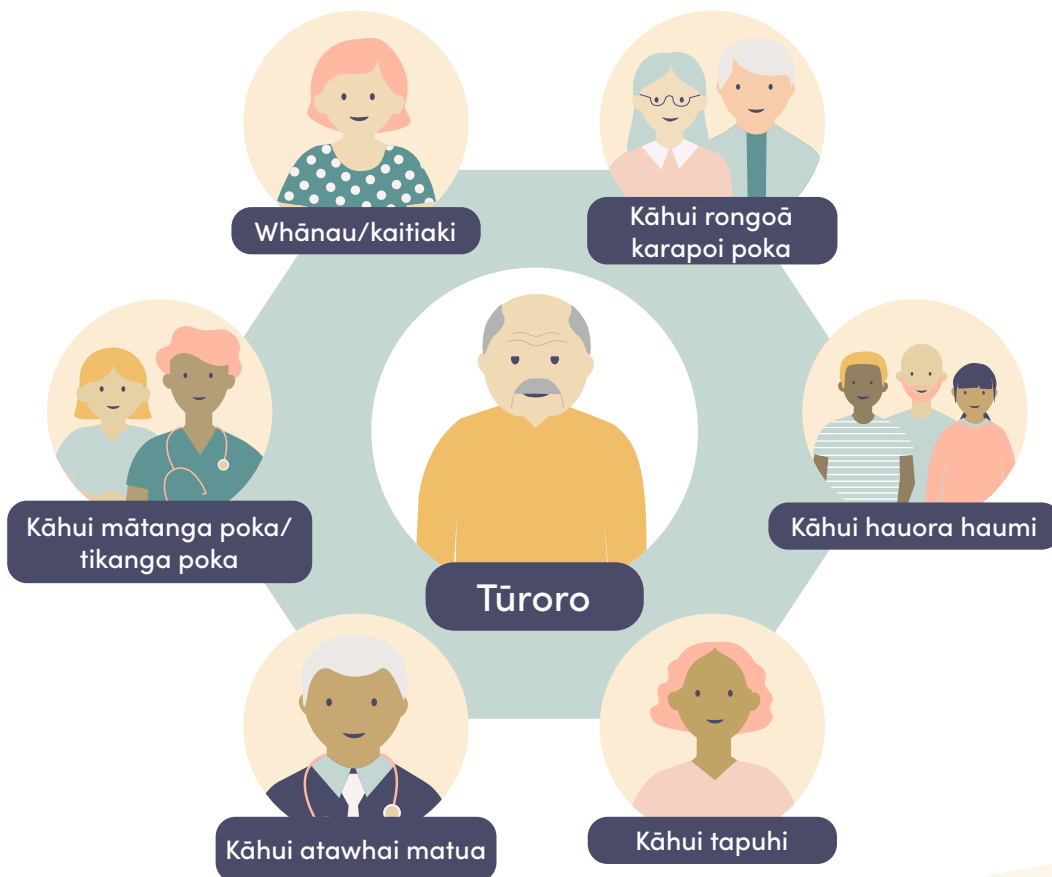
TE ATAWHAI KARAPOI POKA

Hei āwhina kia riro i a *koe* tāu e hiahia ai mō te wāhi ki tō poka

Ki te tohua koe ki raro i te atawhai o te kāhui atawhai karapoī poka, ka mahi pinepine te tākuta e whakariterite ana i tō atawhaitanga (ko te nuinga o te wā he kaitukurehunga) ki a kōrua ko tō mātanga poka, kaituku matua rānei (ko te nuinga o te wā ko tō tākuta):

- Kia whai māramatanga ki tōu e hiahia mai ai i tō tapahanga.
- Kia whakaaetia te aruaru tika hei whai.
- Hei tautuhi i ngā ara hei whakapakari i tō tinana ki te pakari e taea ai i mua i tō poka.
- Hei whakaemi i te kāhui ngaio hauora hei tiaki i tō hauora me tō oranga, tae atu ki tō whakaoranga me tō hokinga anō ki te tino oranga.

He mea nui kia whai wāhi mai hoki ki te kāhui atawhai karapoī poka ko te hunga e tautoko ana i a koe, pērā i te whānau, i ngā kaitiaki anō hoki.



Ka auau te whakawhitiwhitinga kōrero i waenga i a kōrua ko te kāhui atawhai rātou hoki ki a rātou anō kia mātua whakarite he mārama, he pai hoki te aruaru ki te katoa, he pai hoki te mahinga tahitanga ki te whāinga kotahi. Ahakoa he aha me whai wāhi koe ki ngā whakataunga e pā ana ki tō atawhaitanga.

Ka kōrero te tākuta e whakariterite ana i tō atawhai i ō kōwhiringa ki a koe. Arā ko te hiki pea i te poka kia whai wā ai koe ki te whakapiki i tō oranga ki te pakari e tino taea ai, te kimi rānei i ētahi mahi kē atu i te mahi poka. Ka kōrerohia ngā mōrearea, ka whakamāramahia hoki te tukanga whakataunga ki a koe. Kei te pai noa iho tō mau mai i tētahi o te whānau ki tō taha.

Mō ētahi pārongo www.anzca.edu.au/periop